

IN-VITRO SCREENING OF YOUR ANTI-CANCER COMPOUNDS

SCREENING COMPOUNDS IN A BATTERY OF 6 SELECTED CELL LINES IN A TIME AND COST-EFFECTIVE MANNER

SUGGESTED IN VITRO MODELS

TUMOR TYPE

- BREAST
- COLON
- MELANOMA
- OVARIAN
- PANCREAS
- PROSTATE
- BRAIN
- BONE
- BLADDER
- CERVIX
- SKIN
- LIVER
- LEUKAEMIA/ LYMPHOMA
- NEURONAL

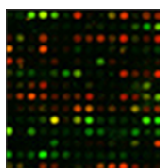
CELL LINES

- MDA-MB-231, BT549
- HCT116
- MALME-3M, UACC 257
- OVCAR3
- PANC-1
- DU-145
- LN-18; C6, PC12, U87-MG
- MG-63
- MBT-2
- HELA
- A-431
- HEPG2
- K562 (IP OR SC), JURKAT, CCRF-CEM
- PC12, SK-N-SH,

OUTCOME MEASURES

- VIABILITY (MTT, SULFORHODAMINE B)
- PROLIFERATION (NEUTRAL RED, TRYPAN BLUE)
- TOXICITY (LDH)
- IMMUNOHISTOCHEMISTRY

GENES



IN-VITRO SCREENING

16-24 Human Cell Line Battery

FUNCTION

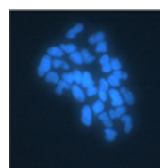
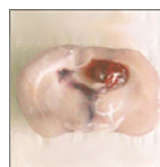


DISEASE MODEL

GLP Preclinical

FIRST-IN-MAN

First-in-Man Phase III a Study



CONTACT

Tomer Shemesh, PhD
Business Development Unit

9 Hamazmera St.
Ness Ziona 74047
Israel

Phone: +972-8-9302771 ext. 107
Fax: +972-8-9302773
E-mail: tomer@pharmaseedltd.com

